

[E[M]CONOMY]
means:

emco industrial
training

Designed for your profit



Small Volume. Great Performance. CONCEPT TURN 105

CNC training with
industrial performance

Concept TURN 105

The PC-controlled 2-axis lathe with table format not only easily fulfills all basic requirements for technical education and training but also manifests the finest technology: All precision components on the Concept TURN 105 such as headstock, slide, tool system, and tailstock are installed on a rigid, vibration-damping, gray cast-iron inclined bed. Generously sized motors ensure high feed forces and acceleration values. Pre-stressed, backlash-free circulating-ball spindles and an optimum guide ratio for the slides ensure stability and precision. The control for the Concept TURN 105 will accept a PC, on which WinNC, the concept of the interchangeable control from EMCO, can be installed.

[Working area]

- Fully enclosed working area
- Large safety glass window in door
- Generous view of working area
- All-round protection against chips
- Best ergonomics

[Main drive]

- Infinitely variable main drive
- Three-phase asynchronous motor

[Machine base]

- With removable drawer
- Provides space for PC tower

[Tool turret]

- Disk-type turret
- 8 stations

[Tailstock]

- Pneumatic tailstock
- Quill diameter 35 mm



Machine with optional equipment



Door knob

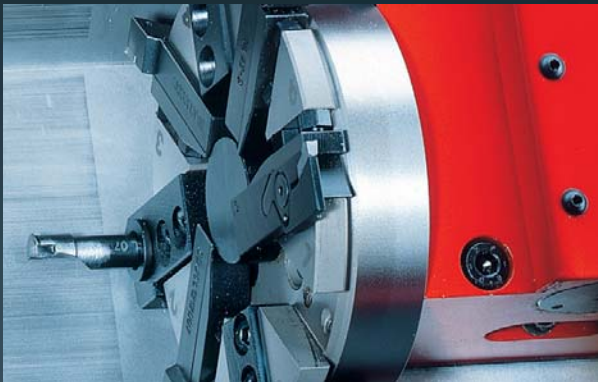


Hose nozzle



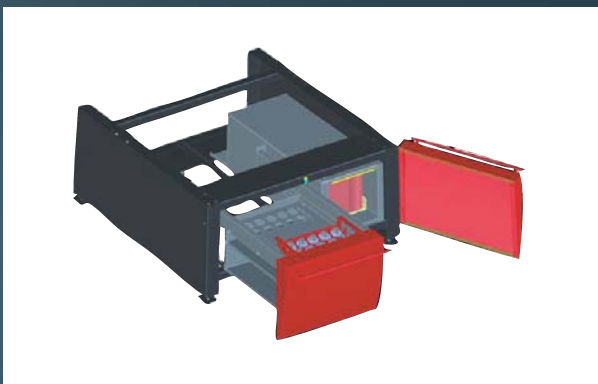
Ball pin

[Technical]



Highlights

- Stable, gray cast-iron inclined-bed construction
- Three-point support for machine bed
- Hardened guideways
- Central lubrication system
- 8-station tool changer
- Fully enclosed working area
- Safety devices in accordance with CE directives
- Made in the Heart of Europe



Options

- Extensive tool range
- Pneumatic tailstock
- USB control keyboard with TFT display
- Robotics interface for integration with FFS and CIM systems
- Automatic clamping device
- Minimum quantity lubrication
- Coolant system
- Machine base with swivel table

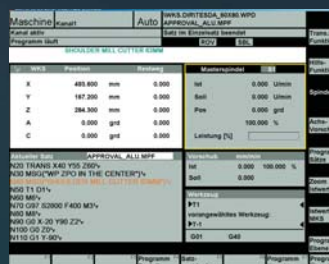
[The interchangeable control]

The unique concept of the interchangeable control can be fitted in all Concept machines. In doing so, the user is trained on all CNC industry control units that are common on the market. Up to eight different control units can be installed and taught on one single machine at present.

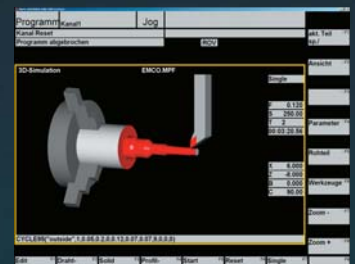
The result: All CNC technicians can be applied more flexibly. And this is a decisive plus: for the qualified employees as well as for the business.



The conversion to another control system is carried out within a minute by calling up the respective software and by simply replacing the control specific module



Simple to program using the EMCO WinNC control units



Simulation suitable for training using Win3D-View

